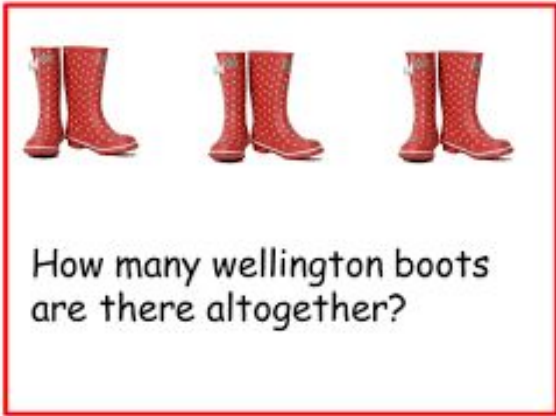


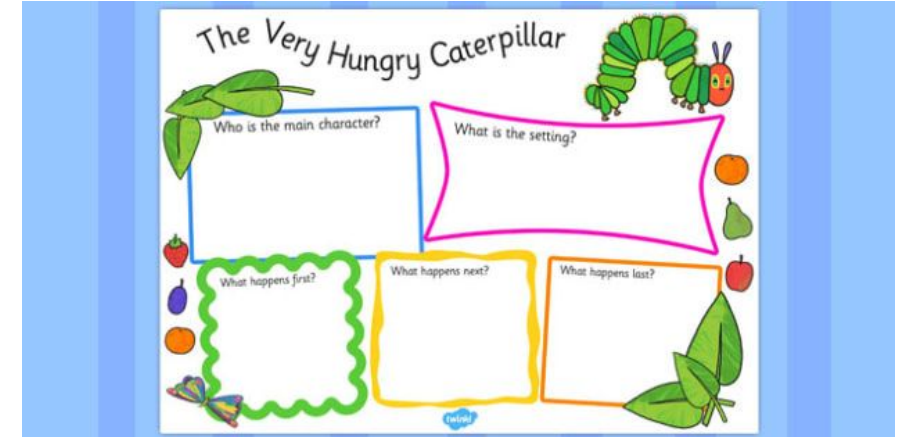
Reception –



Can you count in 2's? What can you find around your house that you could count in 2's?



What is your favourite story? Can you write a book review to tell everyone why you like it so much? Who are the characters? What happens in the story?



Can you paint your own Japanese Blossom Tree?

You can now log onto phonicsplay.co.uk for free using
Username **march20**
Password **home**
There are lots of games and resources to support phonics at home.







Remember to read every day.



Phonics; Today we are revising the sound 'ea' as in **eat**.

Name _____ Date _____

Name _____		stage	
ea like in		 leaf	
 eat	 read	 meal	 peach

<u>ea</u>		
 s__	 p__	 r__d
 s__l	 b__n	 b__ch

s__t	__t
m__l	m__t
t__m	b__k
l__f	cl__n
ch__p	d__m
p__ch	cr__m
pl__se	t__cher

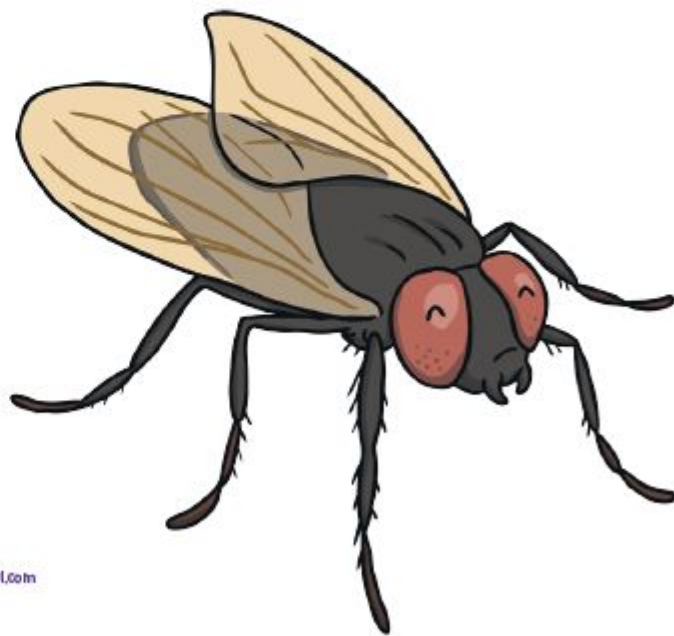
Can you practice your letter formation and remember the single sounds you have learnt so far? Perhaps you could practise them with chalk outside?



Patterns

Year 2 Spelling

The long **i** sound is spelt **-y** at the end of words.



Example words:
cry, fly, dry,
try, reply, July



Words with 'y' Endings

Practise the words on this list using look, say, cover, write and check.

Hint: The when you hear the /igh/ sound at the end of a word, it is most often spelt using a 'y'.



Word	1st try	2nd try	3rd try
try			
fly			
dry			
reply			
July			
why			
spy			
my			
sty			
buy			

Can you find the meaning of these words using a dictionary?

English – To understand what a verb is.

VERB

A verb is a word that shows actions. The action can be physical or mental.

run popped
speak dream
 think

Name: _____

Verbs

Write the word for each picture:



to _____

to _____

to _____

to hop

to shout

to brush

Think of 3 more verbs

to _____

to _____

to _____

Maths – Time

As it is the last day of learning about time today, I thought you could decide what you might need to practise from the last weeks learning.



You can practise showing times on your clock. Challenge yourself to some more tricky times like 5 minutes past or 20 minutes to.

You can keep practising word problems.

1. Thomas visits a local farm. He arrives at 9am and spends 2 hours there. What time did he leave?
2. One sunny day, Class 3 go outside at 1pm to play rounders. They go back inside after 1 hour. When do they come inside?
3. Mr Davies goes on a bike ride. He says goodbye to his family at 10am and returns at 2pm. How long was he cycling for?
4. Henry gets a party invitation. It starts at 3pm and ends at 6pm. How long will the party be?

Here are some links to some games to help you practice

<https://mathsframe.co.uk/en/resources/resource/116/telling-the-time>

<https://www.topmarks.co.uk/time/teaching-clock>



Can you learn all of these facts?

Maybe you could make up a dance to help you remember the months of the year?



This half term, for your afternoon work you are going to be completing a project about Japan! Everyone in the school is doing the same project so that if you have siblings, then you can all do similar activities and teach each other things. Activities will be posted weekly with a particular focus (the first one is Climate and Geography)

Choose the activities you would most like to do and present them creatively! You can present your work however you like, for example, in the form of artwork, a scrapbook, a PowerPoint.

Suggested activities for Climate and Geography. (Please feel free to do your own if you would prefer.)

- Can you find Japan on a map? What is its capital city? What Oceans does it have around it? Can you draw a map of Japan and add the cities and Oceans. What continent is Japan on?
- What does the flag of Japan look like? Can you draw it? Does it have a meaning?
- Are there any famous landmarks in Japan like mountains, volcanoes, rivers and lakes. Can you research one and make a tourist information leaflet. Can you add pictures?
- What is the Climate like in Japan? Does it have seasons? Are some parts of the country hotter than others? How does this compare to England?
- What is the Capital City of Japan Like? How is it the same/different from London? What is its population? Can you write a postcard as if you are in Japans Capital telling a family member what it is like. You could talk about the temperature, how busy it is, what the buildings and shops are like.

- REMEMBER, you do not have to do all of these in a week, they are just ideas. Have fun.