

# Thursday 4th June

## Good morning!

Maths: To read a scale.

English: When to use 'a' or 'an' .

Suggested afternoon activities –

Science: To investigate the function and types of teeth.

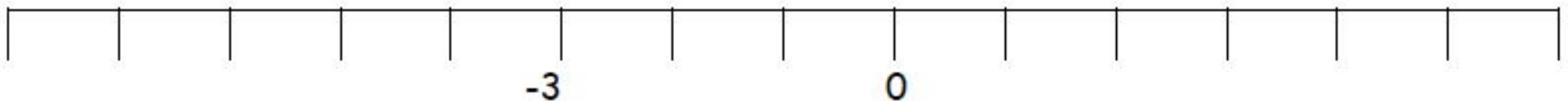
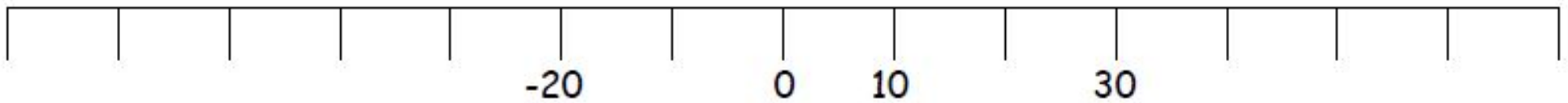
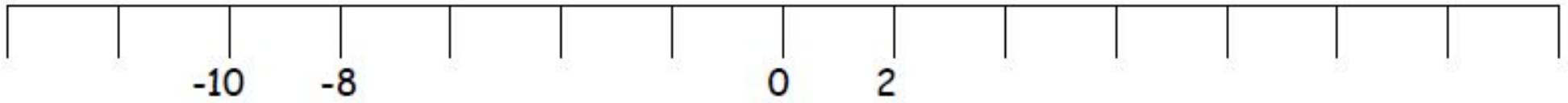
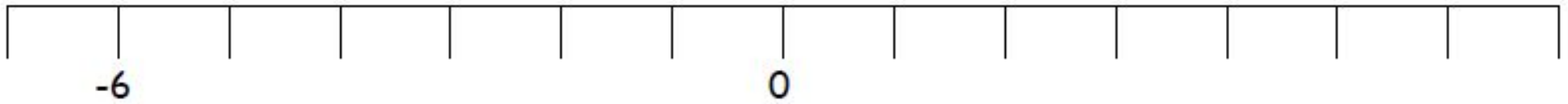
# SPELLINGS

Practice spelling these 'sc' words. Then use them in a sentence.

Word	Look	Cover	Write	Check
science				
scientific				
scene				
scenic				
fascinating				
scent				
ascend				
descend				
obscene				
scissors				

# ARITHMETIC: NEGATIVE NUMBERS

*Finish these scales:*



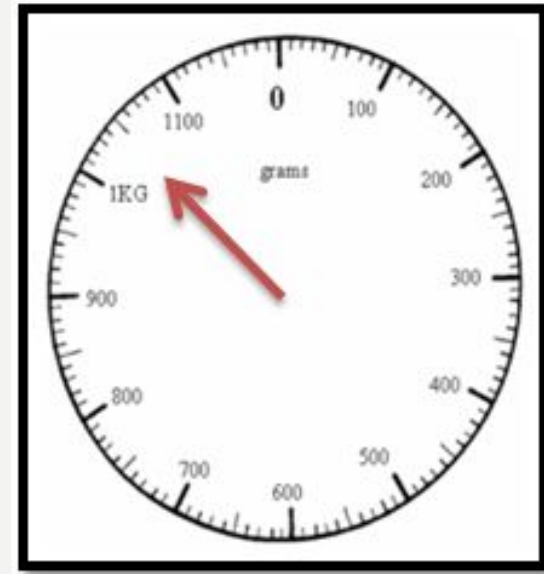
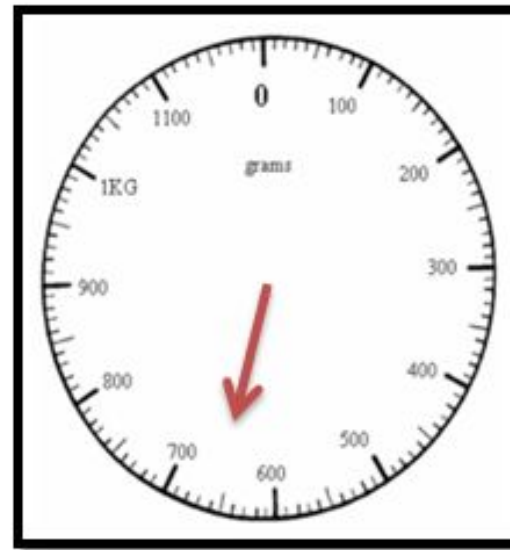
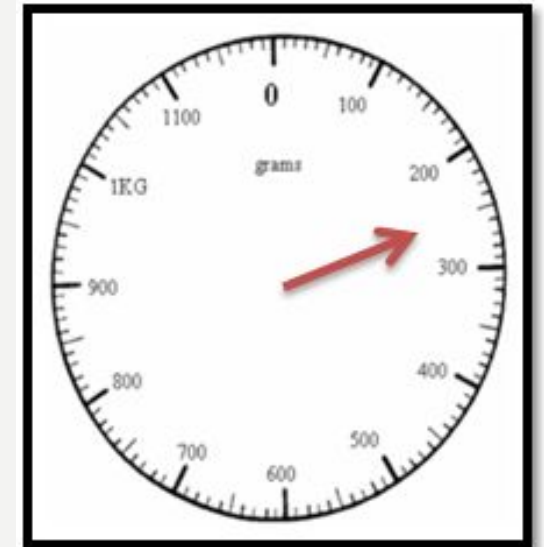
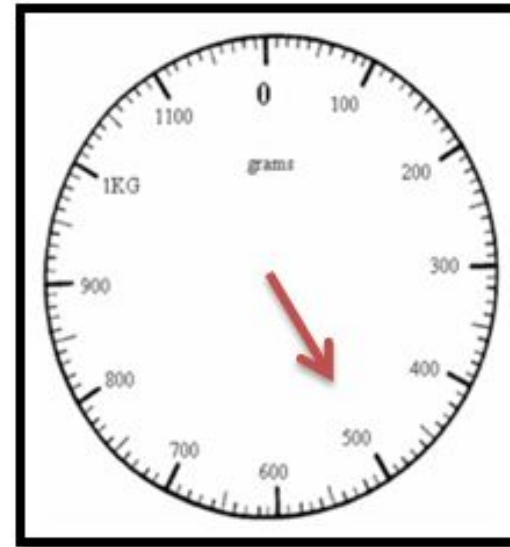
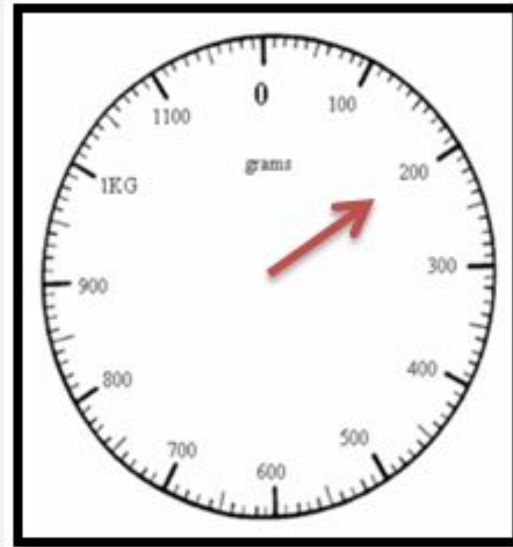
In maths today we will be looking at weight.

If you like, you can weigh some items practically with a set of kitchen scales at home.

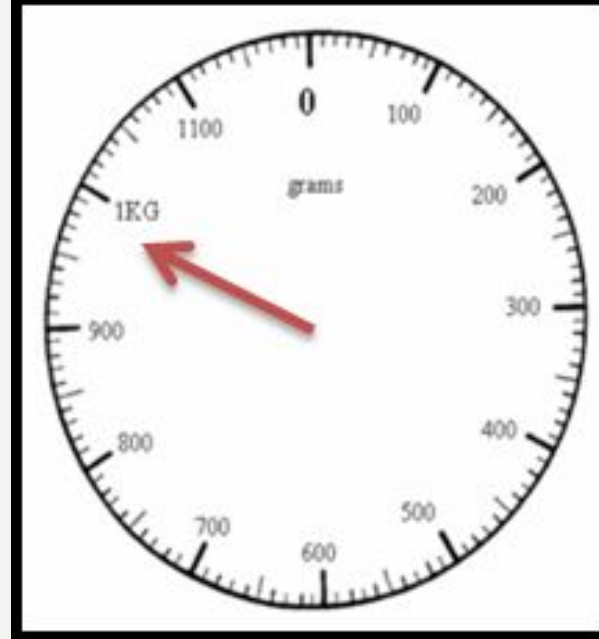
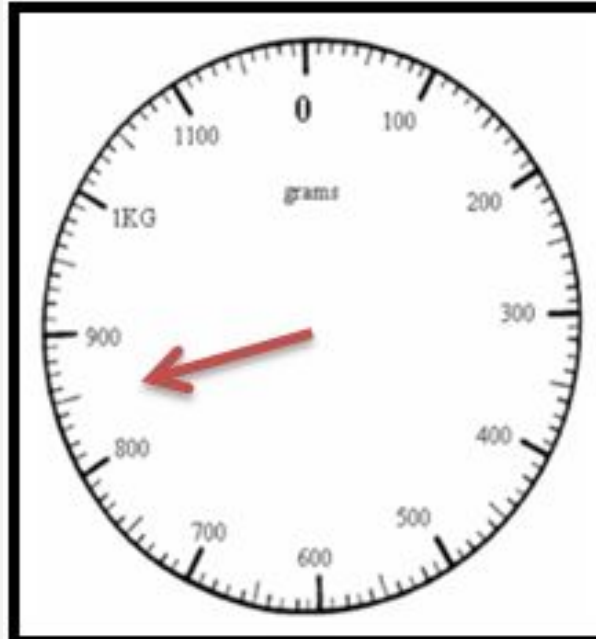
### Challenge 1:

Read the amounts on the scales and write them in grams (g).

If the arrow is pointing to halfway between the numbers, think about what the difference is between them. For example, if it was pointing halfway between 200 and 300, it must be 250g because there is 100 between 200 and 300.



## Challenge 2:

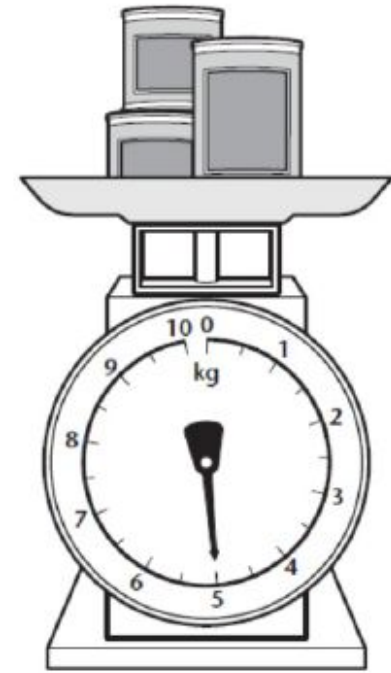
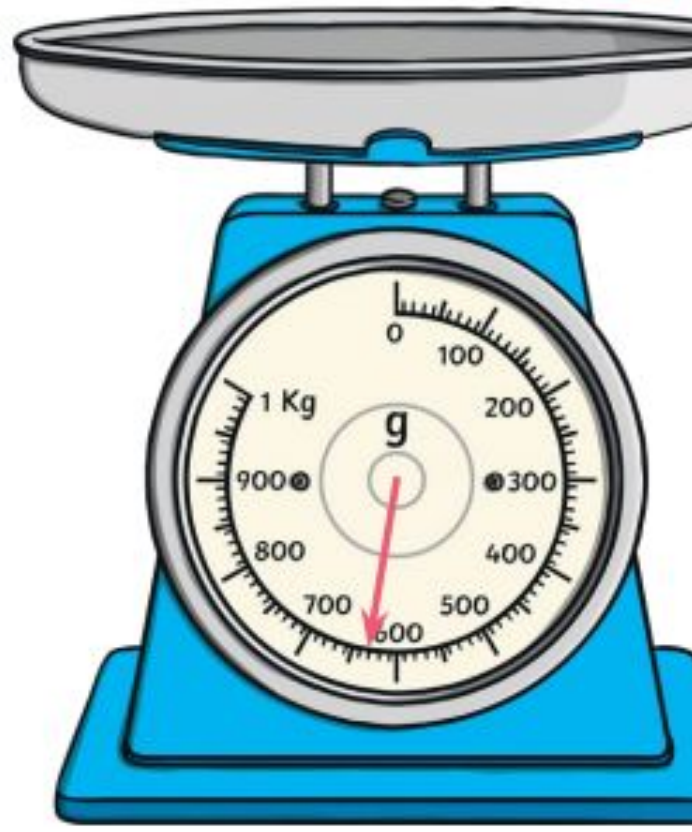


Challenge 3: Remember, labelled intervals are the lines between the measurements.

From the scales shown, state what each labelled interval represents.

\_\_\_\_\_

What is the mass of sugar on these scales? If I add another 90g of sugar, draw the pointer at the correct place on the scales.



The two small tins each have the same mass.  
The mass of the big tin is 2.6 kg.  
What is the mass of one small tin?  
Show your working.

**ENGLISH:** Today we will be looking at when to use 'a' or 'an' with a noun.

Discuss the animals below. Can you see a pattern of when 'a' is used and when 'an' is?

*HINT: Look at the first letter of the noun.*

## What is the pattern?

An elephant

A horse

An apple

A dog

An ostrich

A peach

An igloo

A mouse

An undertaker

A frog



When do we need to use a and when to use an before a word?

We use a when the first sound of the next word is a consonant.

For example, a car.



We use an when the first sound of the next word is a vowel.

For example, an apple.



Sometimes we use an even if the first letter is a consonant. This is because the consonant is silent.

For example, an honour.

In this case, even though the word honour starts with a 'h' the sound is an 'o' sound which is a vowel.

# TASK:

Put the correct article before the noun/noun phrase and use it in a sentence.

Dog, octopus, dragon, onion, hotel, fireman, aeroplane, honest child, frog, angry mosquito.

Don't forget to use adverbs and adjectives in your sentences. Yr4 should be thinking of using fronted adverbials.

Eg. Quietly, a dragon crept into the old town and started to steal innocent children for its supper.

# The Human Body



Today we will be looking at a different part of the body, the teeth!

Here are some suggestions of tasks you could do to learn about teeth:

- 1.) Find pictures of a human jaw and sketch it, labelling the different type of teeth and what they are used for.
- 2.) Research what prehistoric man would have eaten and compare the teeth they used to our teeth today.
- 3.) Find pictures of animal teeth and compare them to pictures of human teeth.
- 4.) Design a leaflet/TV advert/poster explaining how brushing your teeth and eating certain foods can keep your teeth healthy.
- 5.) Write a letter as the tooth fairy explaining why healthy teeth are worth more.
- 6.) Bite down into something soft like an apple. Look at the teeth marks and decide which teeth you used to bite. Then chew and think about which teeth you are using to chew the food.