

<http://www.churchsidefederation.norfolk.sch.uk/mundford/>

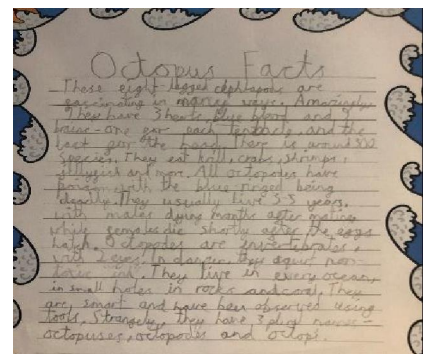
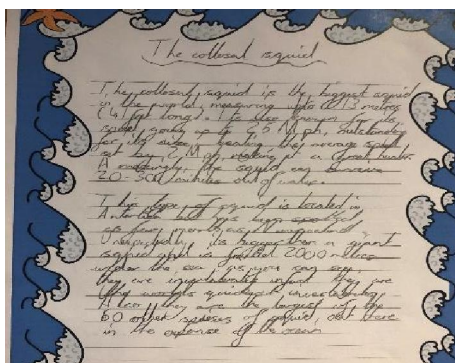
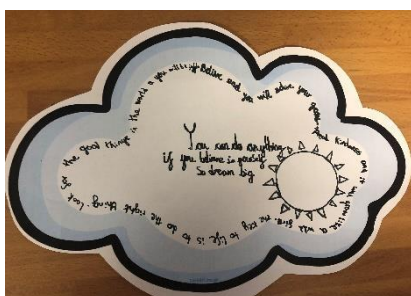
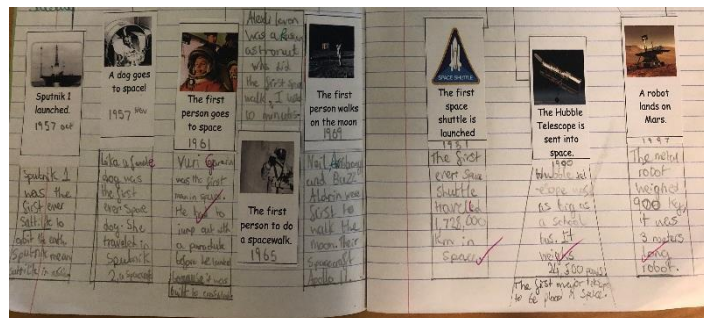
**Big Question:** Do you have to like someone to be kind to them?

### Stars of the Week:

### Wow of the Week:

Oak: *Ellie-May* Hazel: *Henry B* Maple: *Lottie* Cedar: *Stanley* Rowan: *Alfie* Elm: *Ella* Sycamore: *Eva*

Here is a selection of work from our Year 6s in Sycamore from the Here We Are project:



## Word of the Week

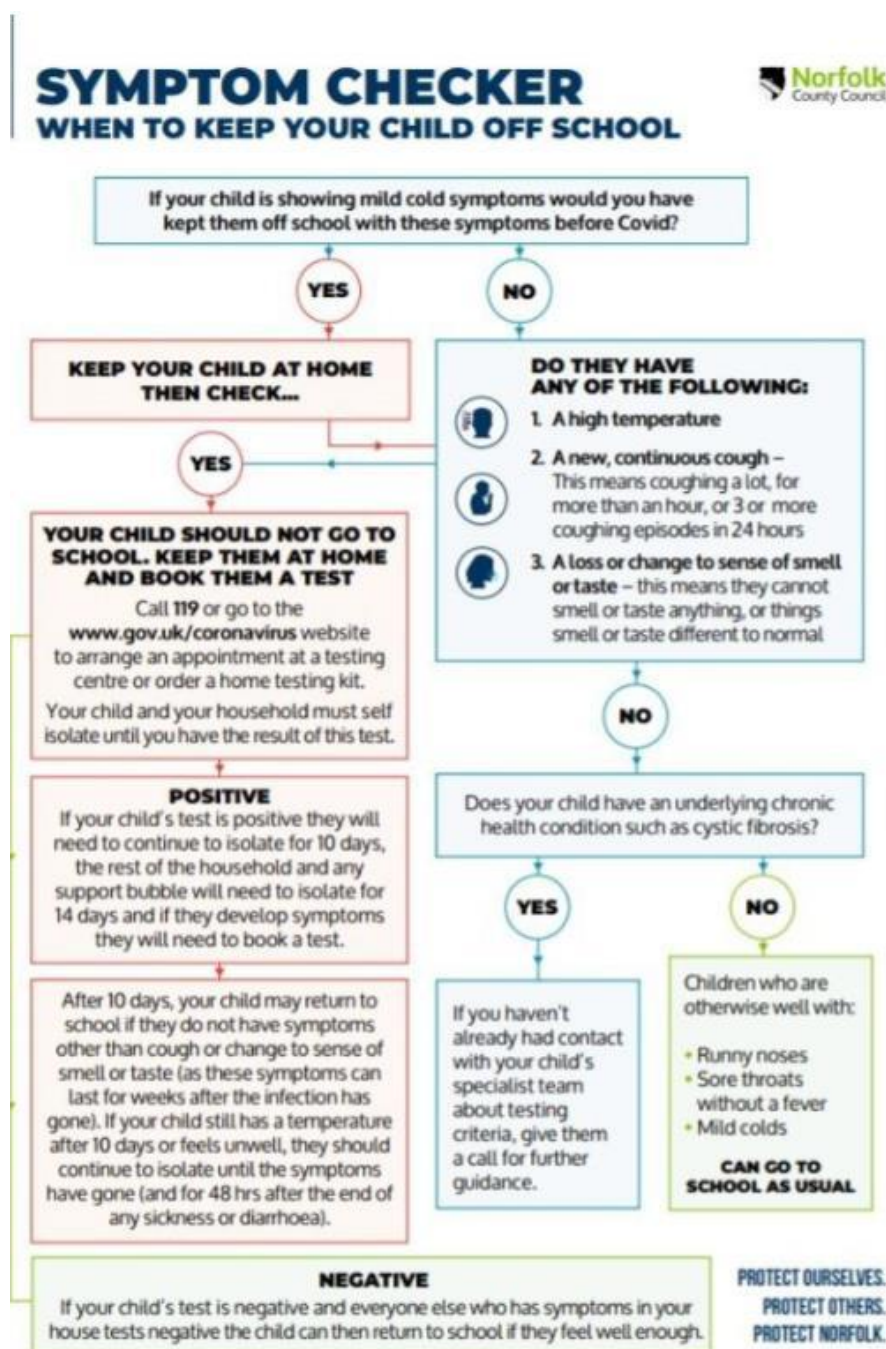
Learning new words is a great way to help your child and its fun too. Each class will have particular words that they are focussing on, but you can also find a word of the day here. Check out the latest word here: <https://www.collinsdictionary.com/word-of-the-day>

## Collecting Children From After-School Clubs

As we are now using both sides of the school as pupil entrances and both gates. For the safety of all the children, we kindly ask that you do not park cars on the school playground when collecting children from after-school clubs. Thank you

## Harvest Festival

You can join with our virtual Harvest Festival via the school facebook page.



## Online Resources

We have a number of online resources that you can use at home to help your children.

### Letterjoin

[www.letterjoin.co.uk](http://www.letterjoin.co.uk)

Desktop Login username: Mund password: ford

Tablet Login username: Mund passcode: a capital 'L' shape starting at top left

This site allows children to practise their handwriting and spelling.

### Purple Mash

<https://www.purplemash.com/sch/mundford>

We use Purple Mash for teaching computing, but it also contains games sections for practising English & Maths at home. All children have their own individual log-in. Please ask your child's class teacher if they cannot remember it.

### PIXL Times Table App: <https://timestable.pixl.org.uk/>

All KS2 pupils have an individual log-in for the times table app – please speak to class teachers if they cannot remember this.

Apple App Store: <https://apps.apple.com/gb/app/pixl-times-tables/id1300608796>

Google Play Store:

[https://play.google.com/store/apps/details?id=air.com.matthewwoodfine.timestables&hl=en\\_GB](https://play.google.com/store/apps/details?id=air.com.matthewwoodfine.timestables&hl=en_GB)

## Diary Dates

**Virtual Sharing Assembly:** Every Friday we will celebrate the children within their own class bubbles and share this with you via the school facebook page.

Friday 2<sup>nd</sup> October: Virtual Harvest Festival via our facebook page.

21<sup>st</sup> October: PITA (Point in Time Assessment) reports sent home.

*Half Term Break 22<sup>nd</sup> Oct – 1<sup>st</sup> Nov*

2<sup>nd</sup> – 6<sup>th</sup> Nov: Virtual Parent Teacher Meetings (via Zoom). Class teachers will email nearer the time to arrange appointments.

*Christmas Holidays 19<sup>th</sup> Dec – 4<sup>th</sup> Jan*

*Every effort is made to stick to the planned dates, but occasionally circumstances beyond our control may affect in-school events. We will always inform you as soon as possible of any changes. Thanks for understanding!*

## What are we reading?

As a school, we want to promote a love of reading in every child. As well as daily reading sessions, each class also listens to a class reader. These books are carefully chosen to inspire children, broaden their reading experience and expose them to language they may not read independently.

Currently we are reading:

Oak: The Magic Faraway Tree by Enid Blyton

Hazel: The Enormous Crocodile by Roald Dahl

Maple: How the Whale Became by Ted Hughes

Cedar: King Edward Flashypants & the creature from the crag

Rowan: Wolves by Emily Gravett

Elm: The Orchard Book of Greek Myths

Sycamore: Cosmic by Frank Cotreell-Boyce

Why don't you ask your child about the book? Have they enjoyed it? Can they tell you the story so far? What do they predict will happen next?

**School Uniform:**

<https://corporatetiger.co.uk/school-uniform/>

[www.facebook.com/myclothingltd](https://www.facebook.com/myclothingltd)

**End of Newsletter**